



Education/
Enrichment
Foundation

3809 E. Third Street
Tucson, AZ 85716

Non-Profit
Organization
U.S. Postage
PAID
Tucson, AZ
Permit #4

EEF Thanks its Donors for their Support!

EEF is truly grateful to the following organizations and individuals for their significant contributions to support students and teachers in the Tucson Unified School District.

\$10,000 +

Tucson Conquistadores
Tucson Federal Credit Union
Tom Cordell

\$5,000-\$9,999

Every Voice In Action Foundation
Arizona Daily Star
Community Foundation for Southern Arizona
Glassman Foundation
Kautz Family Foundation
Raytheon
Wells Fargo Foundation
Joan B. Diamond Charitable Trust

\$2,500-\$4,999

PICOR
The Strauss Foundation
Desert Diamond Gaming Enterprise
Diamond Ventures
The Estes Company
Jewish Community Foundation of Southern Arizona
Thrivent Financial for Lutherans
Donald Pitt Family Foundation
Wings Like Eagles Foundation
Bank of the West
Southwest Gas Corporation
Bookman's Entertainment Exchange

\$1,000-\$2,499

Get-Away Today, Inc.
Research Corporation
City of Tucson Police Department
Rincon Optimists
Arizona Book Services
Ray Davies
First National Bank of Arizona
Sara Cohen
University Medical Center
David Overstreet
Glen Farber
Myron Grimes
Elmer and Lorraine Pfeuffer
Pima County Sports Hall Of Fame
Volk Company
Wal-Mart
Canyon Ranch
Diamond Family Philanthropies
Drs. John and Helen Schaefer

EEF also thanks the TUSD employees who so generously gave **\$43,000** to EEF through Payroll Deductions.

\$500-\$999

OMA Foundation
Roger and Vera Pfeuffer
DeConcini McDonald Yetwin and Lacy
The Mary Ann Dobras Family
Dorothy H. Finley
IBM
Allen and Sally Trattner
Educational Leaders, Inc.
Anna Jolivet
Kate Galgiani
Linda Schloss
Chyrl Lander
AFSCME Local 449
Arizona Aerospace Foundation
Citigroup
Murray Everson
HSL Properties
The Forum at Tucson
Jim Click Nissan
Barry and Janet Lang
Robert Padilla
Pima Community College Foundation
Pima County Community College District
Elaine Rice
Dorothy Swerdlove
Jay Taylor
Edmund Marquez
University of Arizona Foundation
University of Arizona College of Education
TMC Healthcare
Northern Trust
KB Home
YMCA of Metropolitan Tucson



News from the Educational Enrichment Foundation



Mariachi Performers from Davis Bilingual Elementary Magnet School serenade the audience at the Ray Davies EEF Luncheon.

Check Out More Exciting EEF News Inside! ▶

9TH ANNUAL RAY DAVIES LIFETIME HUMANITARIAN ACHIEVEMENT AWARD LUNCHEON SNAPSHOTS



Honoree Roger Pfeuffer being presented with his own life-sized pinata at the 2007 EEF Luncheon by TUSD Governing Board Members, Bruce Burke and Alex Rodriguez.



EEF Executive Director, Robert Padilla, greets Gene Jones, generous supporter of the *Opening Minds Through the Arts* program.



Mayor Walkup honors John Humenick of the AZ Daily Star, retiring EEF Executive Director Sally Trattner, Barbi Reuter of PICOR, and Roger Pfeuffer, Superintendent of TUSD.

AN INTERVIEW WITH A BOARD MEMBER



**CHARLOTTE KENDIS,
EEF BOARD MEMBER,
2002–PRESENT**

Charlotte Kendis has been an active member of the Tucson community since she and her late husband, Leroy, moved here permanently in 1975. She joined the EEF Board of Directors at the urging of her good friend, Eileen Starr, and to honor her husband's legacy of service to the community.

We had the opportunity to catch up with Charlotte recently and ask her why she supports EEF. Here are some excerpts from our conversation.

EEF: How did you get involved with EEF?

Charlotte: Eileen Starr invited me to a shoe shopping day, and she told me how I could help with the planning and future of helping education here. I love the programs of EEF, and it's my way to honor my husband's love for children and education.

EEF: Why do you feel it is important to support EEF?

Charlotte: The selfish part is how it has enriched *my* life, knowing how I've helped somebody. My feelings get stronger each year I've been involved—it is the joy of giving.

EEF: Why support public education?

Charlotte: Public education needs more funding.

Private schools get funding from wealthy people—perhaps their financial advisors suggested the donation—but public schools really need the help! It would be so nice to have people give something that would be of value to support children who might not have the resources or funds. My idea is to be a gem and give a jewel!

EEF: What other ideas would you like to share?

Charlotte: It's the giving and the need—you and your friends could create giving circles: "bring a friend and join our giving circle." Leroy's saying comes to mind, "Nobody does it alone!"

EEF: It sounds like you might also be talking about legacy giving. Tell me your thoughts on that.

Charlotte: The greatest giving, no matter the size of the gift, can help so many children. You give with your heart—it's the joy of giving or leaving a legacy. The idea is a great one, because as people learn about the opportunities, they'll want to tell their friend. It's an endless friendship—giving a legacy.

EEF: Final words you want to share with our readers?

Charlotte: It's an opportunity—it's *your* opportunity not to be missed—don't miss it!



EEF staff including Bob Padilla, Jean Schimke, Linda Goode, and Michelle Fuentes.



Dear Friends of EEF,

It is a pleasure to say hello in this, my first year as Executive Director of the Educational Enrichment Foundation. There is much to report in the form of news, both in terms of recent events and forthcoming projects.

The 2007 Annual EEF Ray Davies Luncheon

The Annual EEF Ray Davies Luncheon was, thanks to you, a rousing success. We raised \$107,000, a phenomenal figure considering the challenges that

the economy has been posing for over a year. More than 550 people attended. What a superb event! The funds that were raised will allow EEF to continue to serve the students and teachers of Tucson Unified School District.

New Staff Members

Also, the Educational Enrichment Foundation has welcomed two new staff members in the past four months. We have hired Linda Goode, as our Director of Development and Jean Schimke as our Finance Manager. Michelle Fuentes continues as our invaluable Executive Assistant.

Linda had previously been with Easter Seals in Tucson (11 years) in a variety of positions including Vice President of Development. She subsequently helped establish the new Pima Council On Aging Foundation. She is a Certified Fund Raising Executive (CFRE), has a BA from the University of Arizona, and has a superb fundraising track record here in Tucson. Jean also has a superb background. She has a bachelor of science in management and accounting from Park College in Missouri and has worked in various accounting and business management positions for the J.D. Russell Company and Casa Christian School. We are fortunate to have both Linda and Jean join the EEF team.

New Initiatives

Finally EEF is embarking on several exciting new ventures. To begin with, EEF has received funding in the form of a challenge grant from the Stocker Foundation to establish a new scholarship program for fifth-grade students in TUSD elementary schools. The scholarships will be supplemented by once-a-year campus visits.

Secondly, EEF is contemplating a National Speakers series in which a major figure in the field of education will be invited to Tucson every year to speak on the "Future of Education."

And finally, EEF is planning an International Language Poetry Celebration in which the multi-lingual high school students of TUSD will be invited to submit one poem in two languages, one of which must be English. With 82 languages spoken in TUSD schools, EEF believes that this is an ideal opportunity to capitalize on the diversity and creativity of its students. More details will be forthcoming in future weeks and at the Ray Davies Annual Luncheon on October 23.

Once again, I look forward to working with each of you in helping EEF build a great future for the students and teachers of Tucson Unified School District.

Sincerely,

Bob Padilla

EEF WISHES TO THANK THE FOLLOWING SPONSORS FOR ITS ANNUAL LUNCHEON:

Platinum Sponsor

Glassman Foundation

Gold Sponsors

Arizona Daily Star
Raytheon
Tucson Federal Credit Union
Tucson Lifestyle

Silver Sponsors

Bank of the West
Southwest Gas
The Strauss Foundation

Bronze Sponsors

Ray Davies
Diamond Ventures
The Estes Company
1st National Bank of Arizona
The David Overstreet Family
PICOR
Research Corporation
Helen and John Schaefer
Tucson Police Department
University Medical Center

Copper Sponsors

Deconcini McDonald Yetwin and Lacy
The Dobras Family
Dorothy H. Finley
IBM
Vera and Roger Pfeuffer
Allen and Sally Trattner

Special Underwriting Provided By:

DoubleTree Hotel
Bolchalk/Frey Marketing
KUAT

WHAT'S UP?

10TH ANNUAL RAY DAVIES LIFETIME HUMANITARIAN ACHIEVEMENT AWARD LUNCHEON

October 23, 2008

Noon- 1:30 PM

DoubleTree Hotel

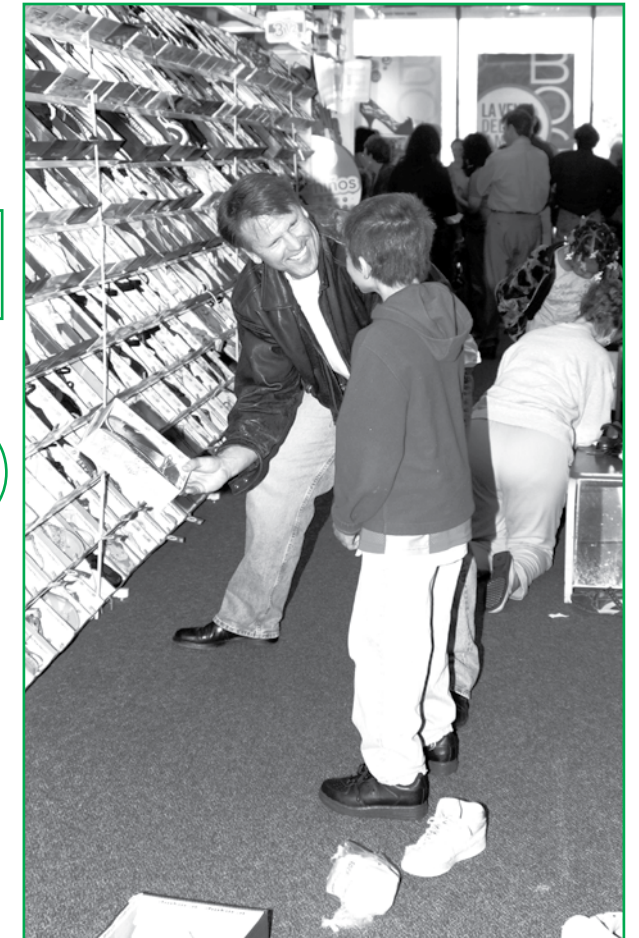
Tucson at Reid Park

*Honoring the Bill and Shirley Estes Family,
Tucson Federal Credit Union,
& Payless Shoe Source.*



Michelle Fuentes, EEF Executive Assistant, and an EEF volunteer help a TUSD student select shoes during a recent "Shoe Shopping Party".

S
H
O
E
S



An EEF volunteer assists a TUSD student in shoe shopping at a recent EEF event.

**AN INTERVIEW WITH A DONOR
DANA PITT OF THE DONALD PITT FAMILY FOUNDATION**

For many years, the Educational Enrichment Foundation has received the very generous support of the Donald Pitt Family Foundation. The Pitt Family Foundation offers grants each year to many important organizations in Tucson in the following areas: the performing arts, art museums, human rights programs, libraries, higher education, environmental conservation, multiple sclerosis and cancer research programs, programs for children and youth, and programs for women.

Traditionally the Pitt Family Foundation has supported EEF's Mini Grants—a special program through which EEF rewards the most innovative teachers within Tucson Unified School District. Recently EEF interviewed Dana Pitt, Vice President of the Pitt Family Foundation, regarding the foundation's support of EEF over the years.

EEF: The Pitt Family Foundation has given generously to the Educational Enrichment Foundation for many years. What is it about EEF that the Pitt Family Foundation finds appealing?

Dana Pitt: We like EEF because it provides direct support to TUSD teachers and students. If TUSD doesn't have the proper resources, the whole Tucson community suffers.

EEF: Why give to public education at all?

Dana Pitt: Public schools are the cornerstone of our society—providing education to every child, regardless of that child's abilities or needs. Unfortunately, Arizona's per-pupil funding ranks last or next to last in the country. If we want a strong, healthy community, we must have strong, healthy public schools. So, we all must do our part to support public education.

EEF: What attributes do you look for in the selection process?

Dana Pitt: We fund programs that match our interests, are run wisely and provide needed services.

EEF: TUSD is an organization with many challenges. What do you believe are its top priorities and what would you suggest as some possible solutions?

Dana Pitt: I think that this question should be simply: *What do you believe are TUSD's top priorities?* I think that the community has developed a huge armchair quarterback mentality regarding the district. We are sure that we could run it better, but we don't really know how to do it. So, with all that said, the answer to the question I restated is: *We believe that TUSD's primary mission is to provide a great education to all of its diverse population.* To do this, TUSD must join with our community to build the monetary support, communication, and trust needed to further this mission.